



**Squires**  
estates

[www.squiresestates.co.uk](http://www.squiresestates.co.uk)

SALES • LETTINGS • MANAGEMENT



## Grants Close, London, NW7 1DD

£675,000 - Freehold

A fantastic, extremely well maintained 3 bedroom chalet bungalow situated within this quiet cul-de-sac in Mill Hill East. The property features a 24ft reception room with stripped wood flooring and benefits include a separate dining room, a beautiful landscaped garden with 2 patios, a contemporary bathroom with separate shower cubicle, off street parking for 2 cars and lovely views. The house is very well located for Mill Hill East Tube station, a Waitrose supermarket and a Virgin Active gym and would suit a wide range of buyers.

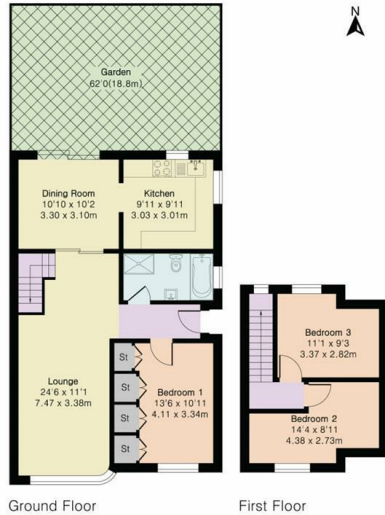
- Chalet bungalow
- Semi-detached
- 3 bedrooms
- 2 patios and landscaped garden
- 2 off street parking spaces
- Contemporary bathroom
- Close to amenities
- Barnet council tax band E



## Floor Plan

Approximate Gross Internal Area 989 sq ft - 92 sq m

Ground Floor Area 732 sq ft - 68 sq m  
First Floor Area 257 sq ft - 24 sq m



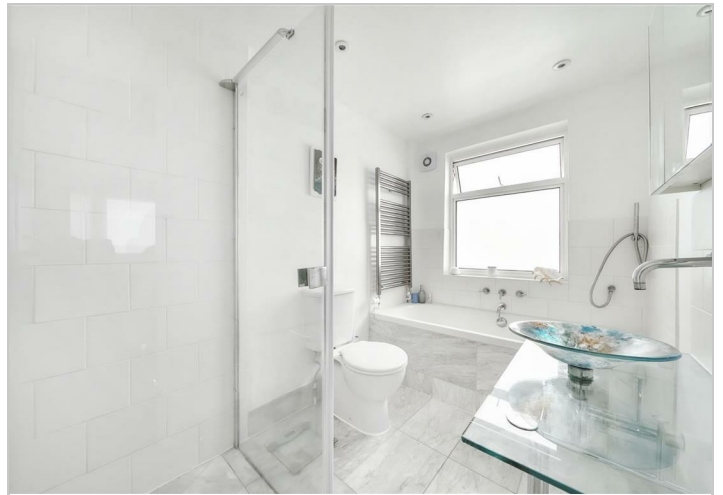
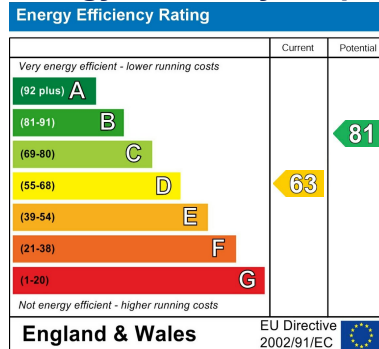
Ground Floor

First Floor

## Area Map



## Energy Efficiency Graph



These particulars, whilst believed to be accurate are set out as a general outline only for guidance and do not constitute any part of an offer or contract. Intending purchasers should not rely on them as statements of representation of fact, but must satisfy themselves by inspection or otherwise as to their accuracy. No person in this firm's employment has the authority to make or give any representation or warranty in respect of the property.

### Finchley Branch

181a Squires Lane,  
Finchley,  
London N3 2QS  
Tel 020 8343 2111

### Hendon Branch

16 Central Circus Parade,  
Queens Road, Hendon,  
London NW4 3AS  
Tel 020 8202 0808

### Mill Hill Branch

7 Thornfield Parade,  
Holders Hill Road, Mill Hill,  
London NW7 1LN  
Tel 020 8349 3030

